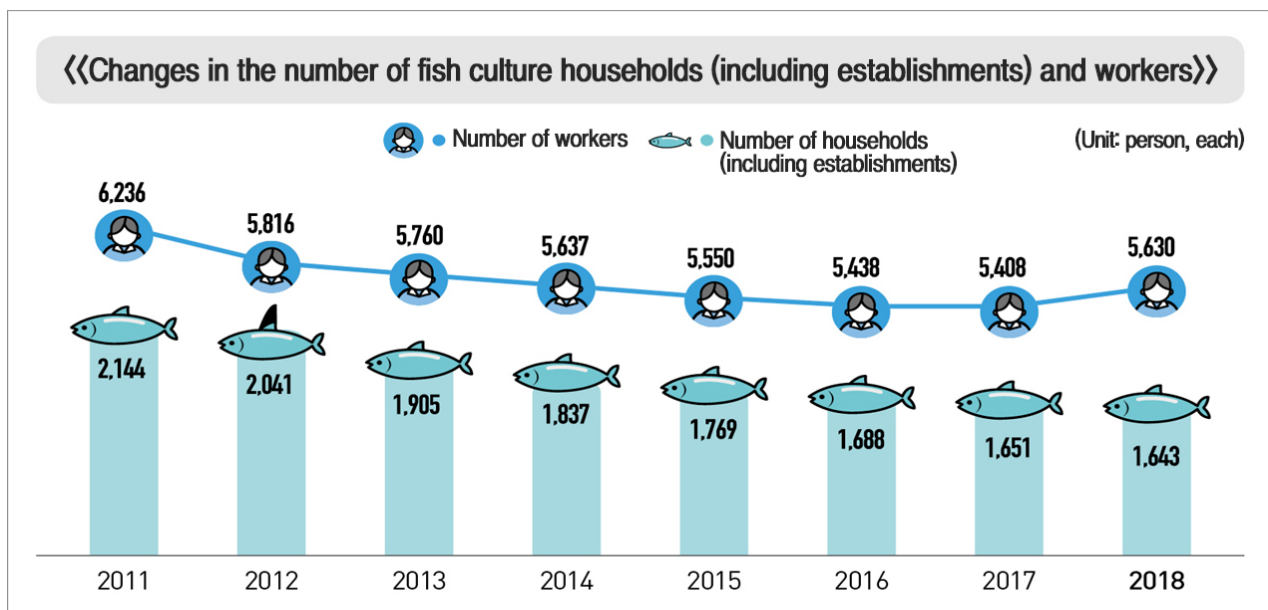




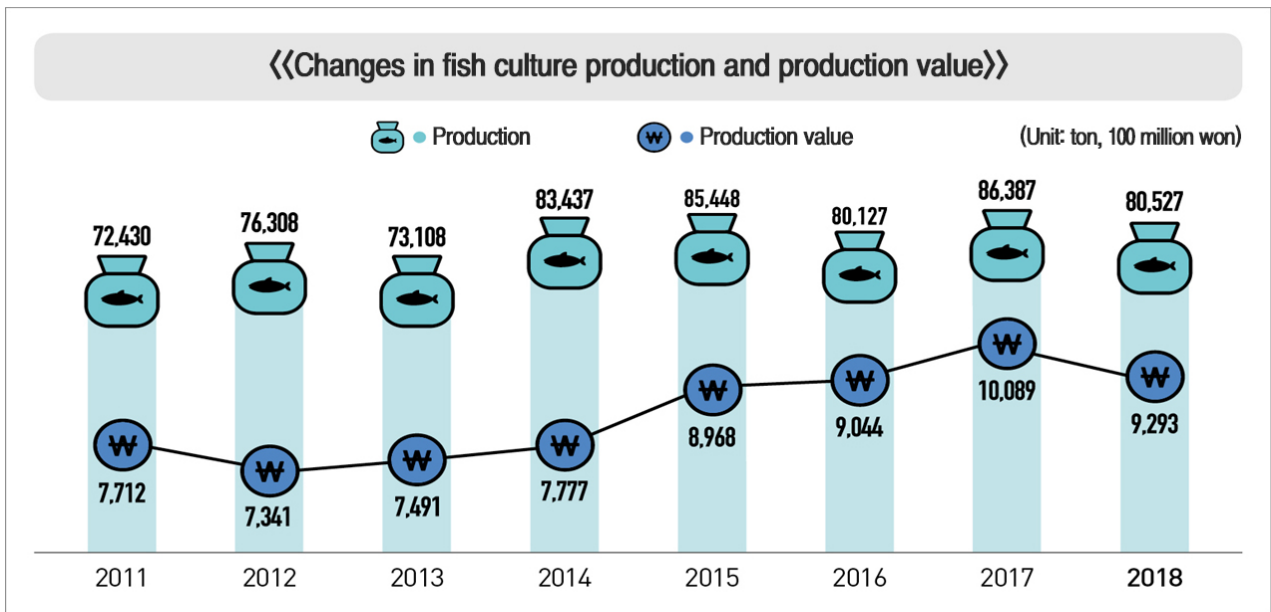
Preliminary Results of the Survey on the Status of Fish Culture in 2018

- In 2018, the number of fish culture workers rose by 4.1%, while the number of fish culture households (including establishments) dropped by 0.5% compared to 2017.
- The number of family workers and regular workers rose by 4.6% and 6.5% from 2017, respectively, owing to the increase in fish culture of 'Barrages' and 'Inland establishments'.
- The number of fish culture households (including establishments) showed a year-on-year decrease, which was caused by the increase in closed small-scale fish culture business entities as a result of rapidly changing water conditions and a rise in operating costs.
- The number of fish culture workers grew by 222 persons (4.1%) from 5,408 persons in 2017 to 5,630 persons in 2018.
- The number of fish culture households (including establishments) dropped by 8 households (-0.5%) from 1,651 households in 2017 to 1,643 households in 2018.



- In 2018, the fish culture production and production value declined by 6.8% and 7.9% from 2017, respectively.
- The fish culture production and production value recorded a year-on-year drop due to a sluggish shipment caused by low water temperature in winter and high water temperature in summer.
- The production of fish culture fell by 5,860 tons (-6.8%) from 86,387 tons in 2017 to 80,527 tons in 2018.

- The production value of fish culture dropped by 79.6 billion won (-7.9%) from 1,008.9 billion won in 2017 to 929.3 billion won in 2018.

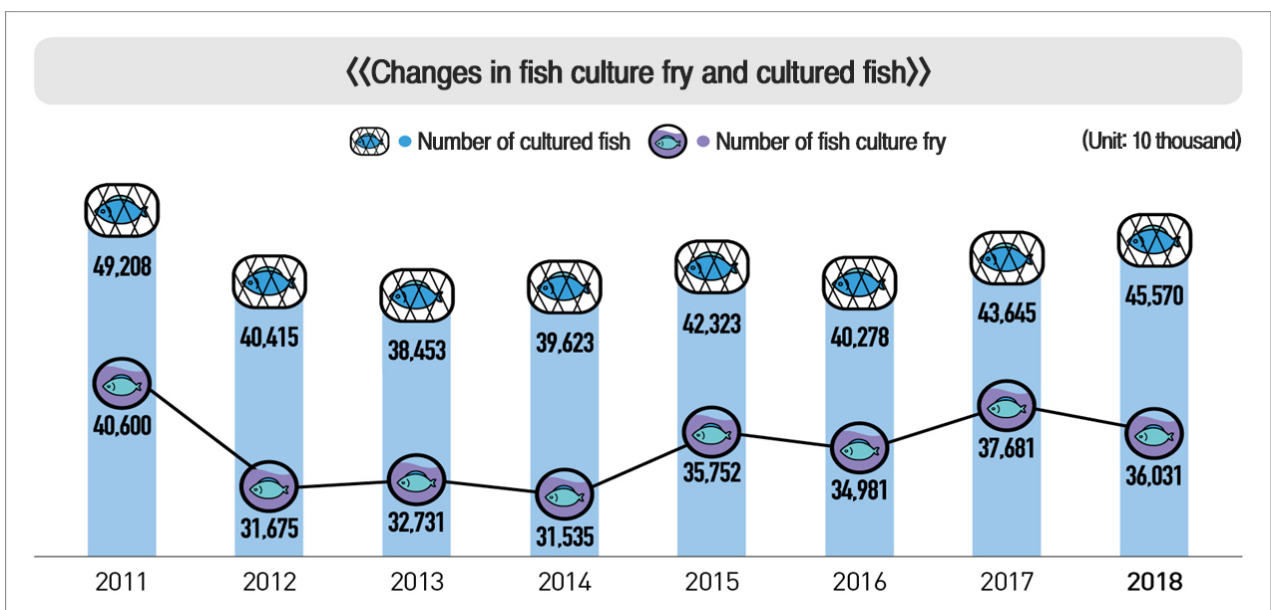


In 2018, the number of cultured fish grew by 4.4%, while the number of fish culture fry declined by 4.4% compared to 2017.

- The number of cultured fish marked a year-on-year rise due to a sluggish shipment caused by low water temperature in winter and high water temperature in summer.
- The number of fish culture fry showed a year-on-year drop due to the rise in cultured fish and feed price.

- The number of cultured fish rose by 19.27 million (4.4%) from 436.44 million in 2017 to 455.71 million in 2018.

- The number of fish culture fry dropped by 16.50 million (-4.4%) from 376.81 million in 2017 to 360.31 million in 2018.



□ In 2018, the amount of feed rose by 4.1% from 2017.

○ The amount of feed showed a year-on-year increase due to the rise in cultured fish.

- The amount of raw fish pellet grew by 19,907 tons (4.0%) from 494,827 tons in 2017 to 514,734 tons in 2018.

- The amount of formulated dry pellet increased by 3,876 tons (4.4%) from 87,980 tons in 2017 to 91,856 tons in 2018.

