

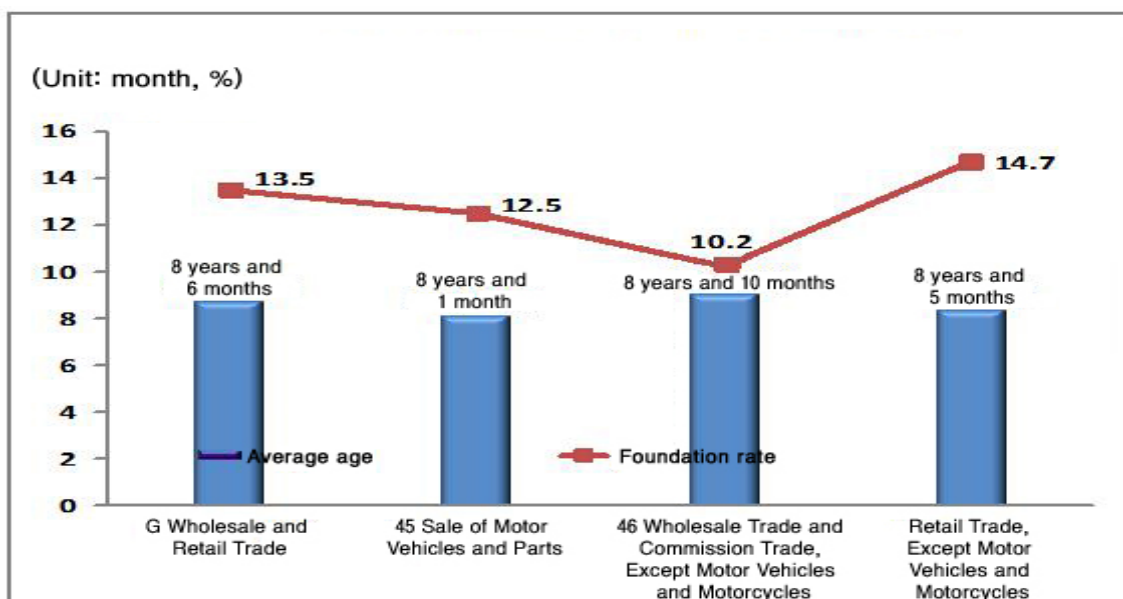
# Status and Characteristics of Establishments by Establishment Age according to the 2010 Economic Census (Focused on Wholesale and Retail Trade)

## [ Wholesale and Retail Trade ]

The average age of establishments in Wholesale and Retail Trade recorded 8 years and 6 months. The establishment foundation rate in Wholesale and Retail Trade marked 13.5 percent.

- The average age of establishments in Wholesale Trade and Commission Trade recorded 8 years and 10 months, which was higher than that of establishments in Wholesale and Retail Trade (8 years and 6 months). The average age of establishments in Retail Trade recorded 8 years and 5 months, which was slightly lower than that of establishments in Wholesale and Retail Trade. The average age of establishments in Sale of Motor Vehicles and Parts recorded 8 years and 1 month, which was lower than that of establishments in Wholesale and Retail Trade.
- The establishment foundation rate in Retail Trade marked 14.8 percent, which was higher than that of establishments in Wholesale and Retail Trade (13.5 percent). The establishment foundation rate in Sale of Motor Vehicles and Parts marked 11.6 percent, which was lower than that of establishments in Wholesale and Retail Trade. The establishment foundation rate in Wholesale Trade and Commission Trade marked 10.1 percent, which was lower than that of establishments in Wholesale and Retail Trade.

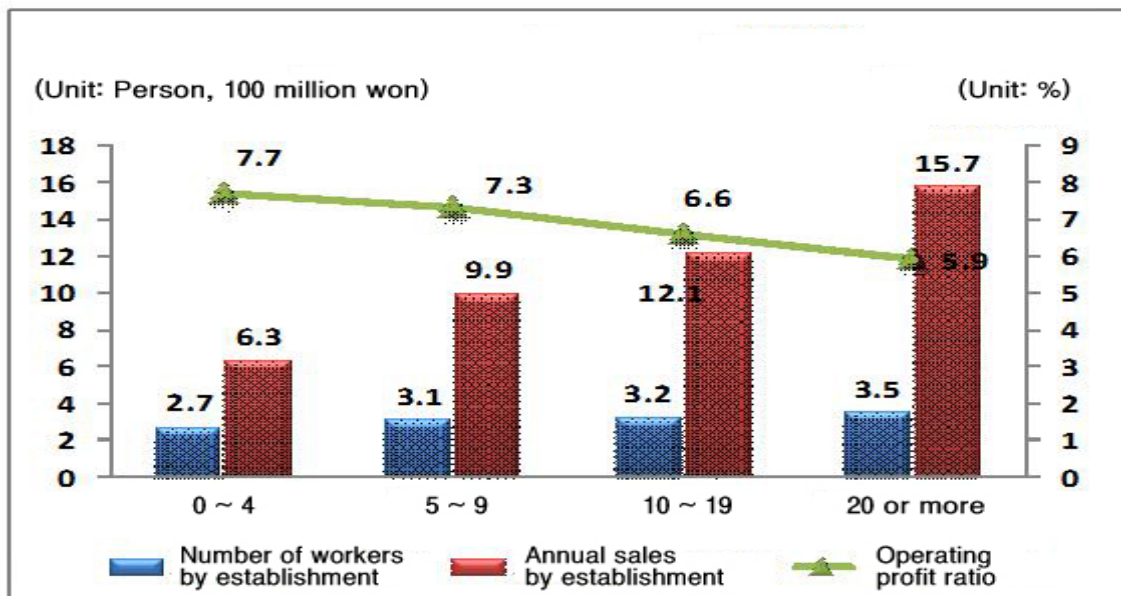
< Average age and foundation rate of establishments by industry >



**The older establishments in Wholesale and Retail Trade, the lower operating profit ratios. In the meantime, the older establishments in Wholesale and Retail Trade, the higher number of workers and annual sales per establishment.**

- The operating profit ratio of establishments in Wholesale and Retail Trade stood at 7.0 percent. The number of workers in Wholesale and Retail Trade recorded 3.0 persons per establishment. The annual sales in Wholesale and Retail Trade recorded 935 million won per establishment.
- The operating profit ratio of establishments aged 0 to 4 in Wholesale and Retail Trade stood at 7.7 percent. The operating profit ratio of establishments aged 20 or more in Wholesale and Retail Trade stood at 5.9 percent. The older establishments in Wholesale and Retail Trade, the lower operating ratios.
- The number of workers for establishments aged 0 to 4 in Wholesale and Retail Trade was 2.7 persons per establishment. The number of workers for establishments aged 20 or more in Wholesale and Retail Trade was 3.5 persons per establishment. The annual sales for establishments aged 0 to 4 in Wholesale and Retail Trade recorded 630 million won per establishment. The annual sales for establishments aged 20 or more in Wholesale and Retail Trade recorded 1,574 million won per establishment. The older establishments in Wholesale and Retail Trade, the higher number of workers and annual sales per establishment.

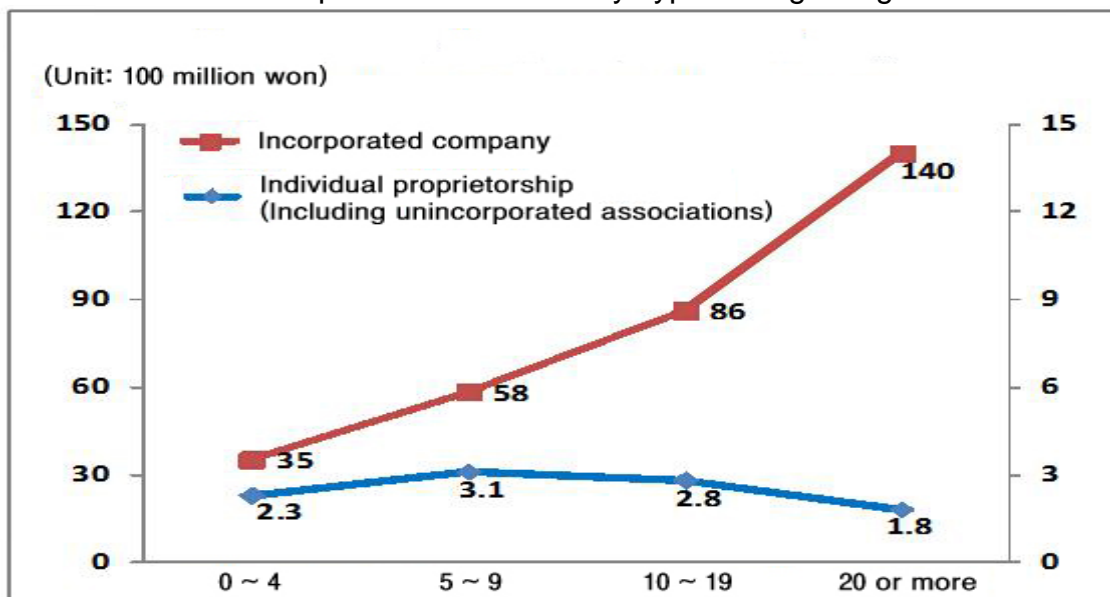
< Status by establishment age [Wholesale and Retail Trade] >



**The annual sales of individual proprietorships were lower than those of incorporated companies. In the meantime, the operating profit ratio of individual proprietorships were 4 times higher than that of incorporated companies.**

- The annual sales of individual proprietorships (Including unincorporated associations) recorded 257 million won per establishment. The operating profit ratio of individual proprietorships (Including unincorporated associations) stood at 15.9 percent. The annual sales of incorporated companies recorded 6,033 million won per establishment. The operating profit ratio of incorporated companies stood at 4.1 percent.
- The older individual proprietorships, the lower number of workers and annual sales per establishment.
- In the meantime, the older incorporated companies, the higher number of workers and annual sales per establishment.

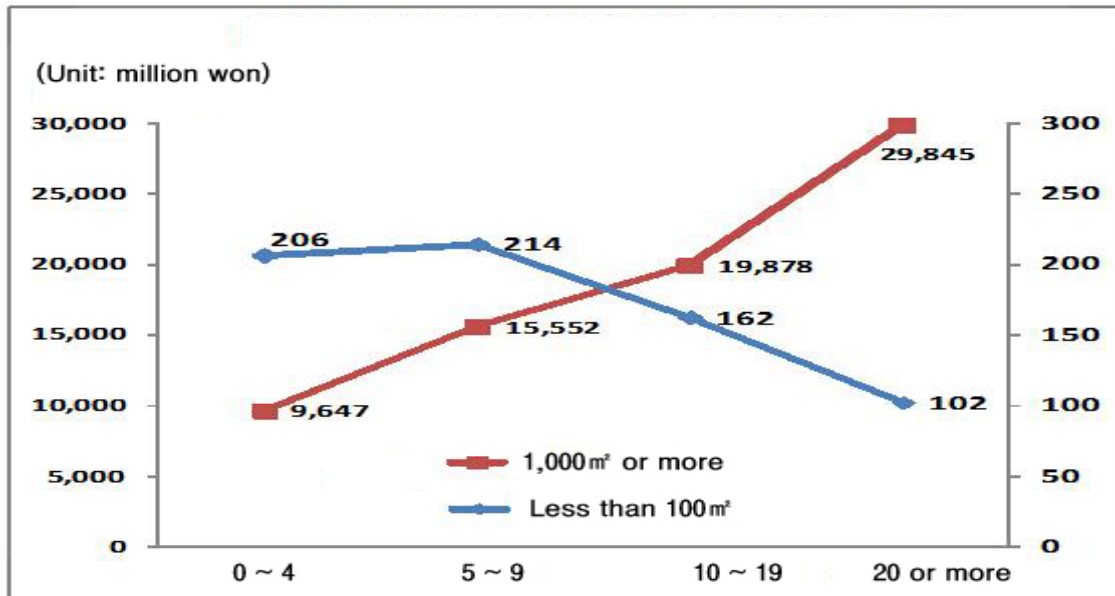
< Annual sales per establishment by type of legal organization >



**The smaller floor space and older establishments in Retail Trade, the lower annual sales per establishment. In the meantime, the larger floor space and older establishments in Retail Trade, the higher annual sales per establishment.**

- As for establishments whose floor space was less than 100m<sup>2</sup> in Retail Trade, the annual sales of establishments aged 0 to 4 marked 206 million won. The annual sales of establishments aged 20 or more marked 102 million won. The older establishments, the lower annual sales per establishment.
- In the meantime, as for establishments whose floor space was 100m<sup>2</sup> or more in Retail Trade, the annual sales of establishments aged 0 to 4 marked 9,647 million won. The annual sales of establishments aged 20 or more marked 29,845 million won. The older establishments, the higher annual sales per establishment.

< Annual sales per establishment by size of floor space >

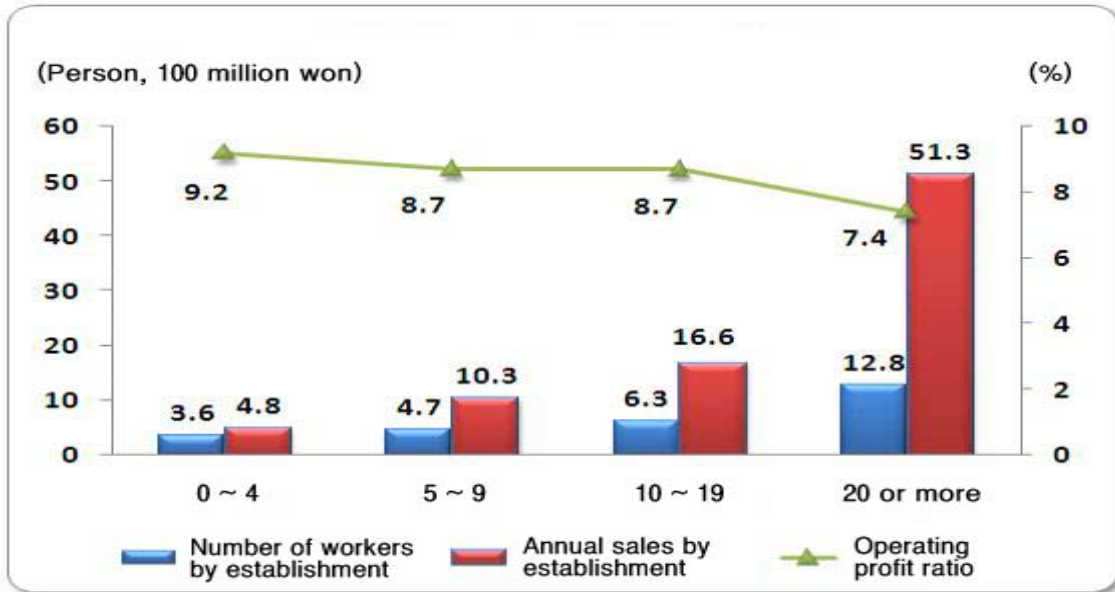


[ All industries ]

The average age of establishments in all industries was 8 years and 4 months. The older establishments in all industries, the lower operating ratios. In the meantime, the older establishments in all industries, the higher number of workers and annual sales per establishment.

- The average age of establishments in all industries was 8 years and 4 months. The operating profit ratio of establishments in all industries stood at 8.3 percent. The number of workers in all industries recorded 5.3 persons per establishment. The annual sales in all industries recorded 4,332 million won per establishment.
- The operating profit ratio of establishments aged 0 to 4 in all industries stood at 9.2 percent. The operating profit ratio of establishments aged 20 or more in all industries stood at 7.4 percent. As for the operating profit ratio of establishments in all industries, the older, the lower.
- The number of workers for establishments aged 0 to 4 in all industries was 3.6 persons per establishment. The number of workers for establishments aged 20 or more in all industries was 12.8 persons per establishment. The annual sales for establishments aged 0 to 4 recorded 484 million won per establishment. The annual sales for establishments aged 20 or more recorded 5,128 million won per establishment. The older establishments in all industries, the higher number of workers and annual sales per establishment.

< Status by establishment age [All industries] >



**The average ages of 'Sports Activities and Amusement Activities' and 'Food and Beverage Service Activities', which recorded a higher establishment foundation rate, tended to show a lower average age of establishments.**

- The industries, which recorded a higher establishment foundation rate compared to all industries (14.3 percent), tended to show a lower average age of establishments compared to the average age of establishments in all industries (8 years and 4 months).
- The average age of establishments in 'Sports Activities and Amusement Activities' (4 years and 1 month), which recorded the highest establishment foundation rate (23.1 percent), was half of the average age of establishments in all industries.
- The establishment foundation rate in Retail Trade (14.8 percent) was higher than the establishment foundation rate in all industries (14.3 percent). In the meantime, the establishment foundation rate in Wholesale Trade and Commission Trade (10.1 percent) was lower than the establishment foundation rate in all industries.

[ Top industries recording a high establishment foundation rate ]

Rank	Industrial classification	Establishment foundation rate	Average age
1	Sports Activities and Amusement Activities	23.1%	4 years and 1 month
2	Food and Beverage Service Activities	21.1%	5 years and 1 month
3	Education	16.8%	8 years and 8 months
	⋮		
7	Retail Trade; Except Motor Vehicles and Motorcycles	14.8%	8 years and 5 months
12	Wholesale Trade and Commission Trade, Except Motor Vehicles and Motorcycles	10.1%	8 years and 10 months