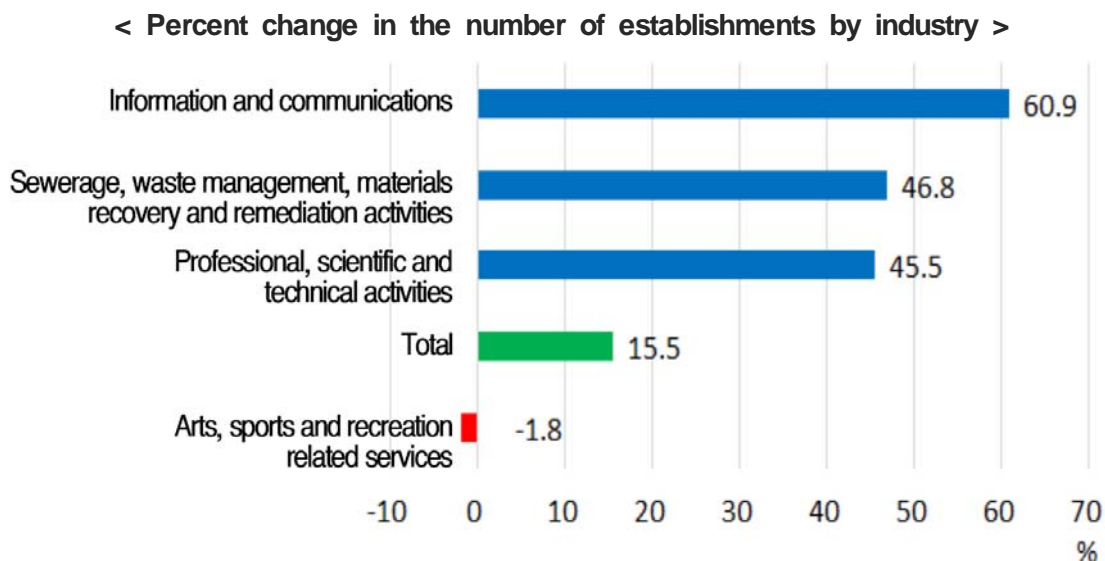
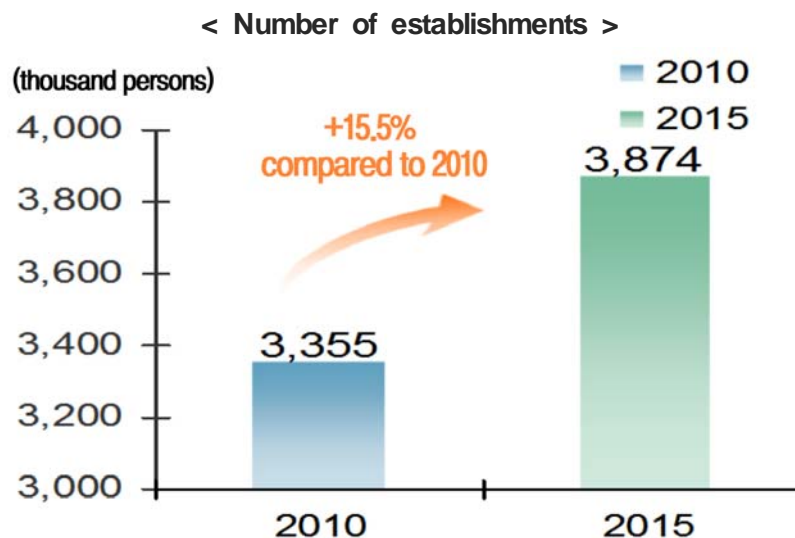


Final Results of the 2015 Economic Census

Number of establishments

◇ At the end of 2015, the number of establishments was 3,874 thousand, up 15.5 percent from 2010.

- The number of establishments was 3,874 thousand at the end of 2015, which increased by 520 thousand (15.5%) from 3,355 thousand in 2010. (an average annual increase of 2.9 percent)
- As for establishments by industrial section, 'Arts, sports and recreation related services' fell by 1.8 percent from 2010. Whereas, all the other industrial sections including 'Information and communications' (60.9%) and 'Sewerage, waste management, materials recovery and remediation activities' (46.8%) showed an increase compared to 2010.

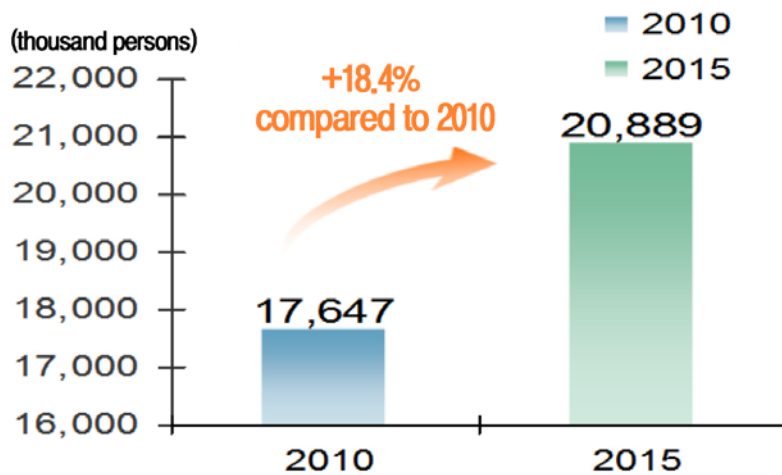


Number of workers

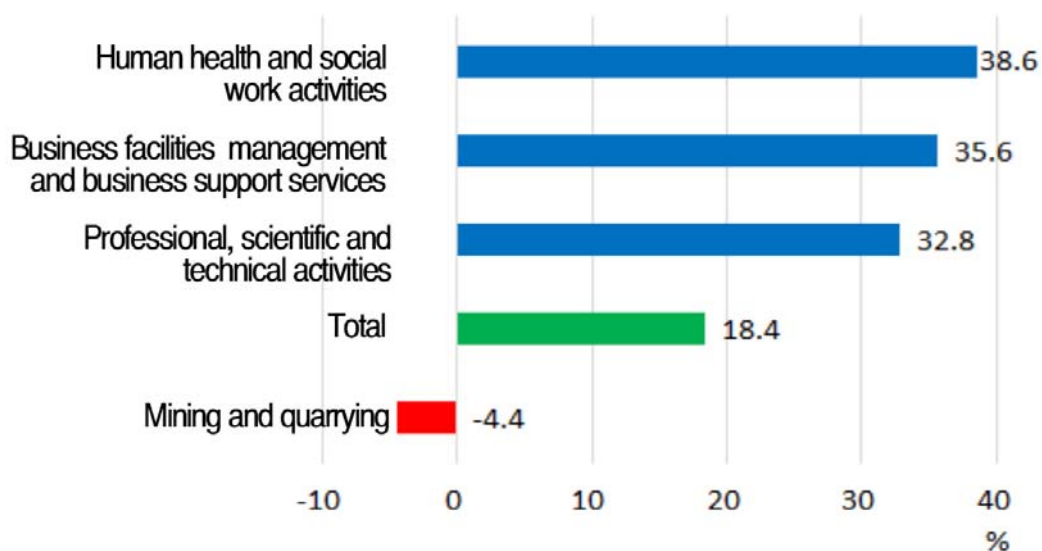
◇ At the end of 2015, the number of workers was 20,890 thousand persons, up 18.4 percent from 2010.

- The number of workers was 20,890 thousand persons at the end of 2015, which increased by 3,240 thousand persons (18.4%) from 17,650 thousand persons in 2010. (an average annual increase of 3.4 percent)
- As for workers by industrial section, 'Mining and quarrying' showed a decrease of 4.4 percent. In the meantime, all the other industrial sections including 'Human health and social work activities' (38.6%), 'Business facilities management and business support services' (35.6%) and 'Professional, scientific and technical activities' (32.8%) showed an increase.

< Number of workers >



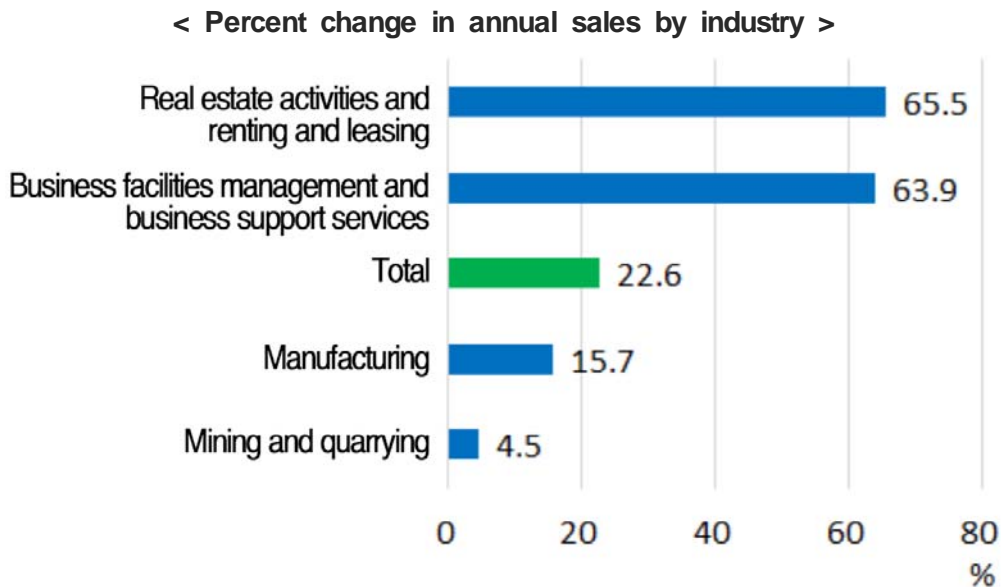
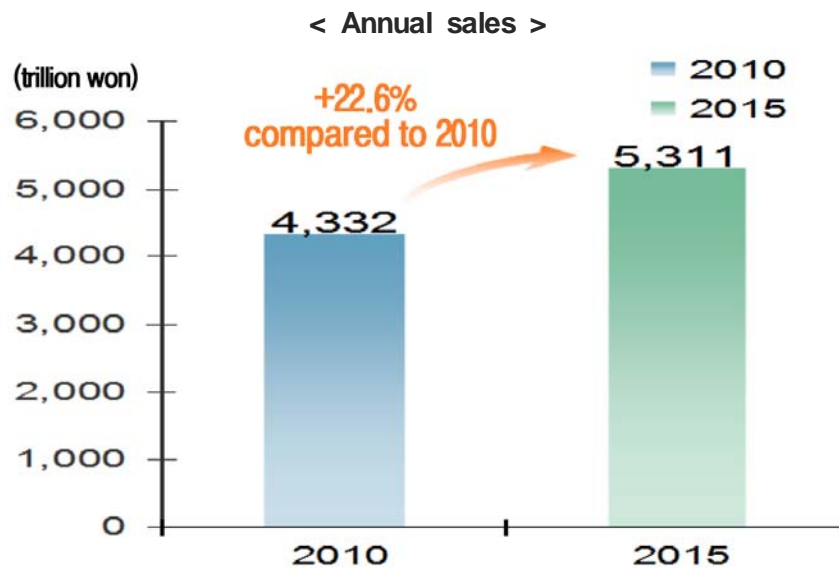
< Percent change in the number of workers by industry >



Annual sales

◇ In 2015, the annual sales amounted to 5,311 trillion won, up 22.6 percent from 2010.

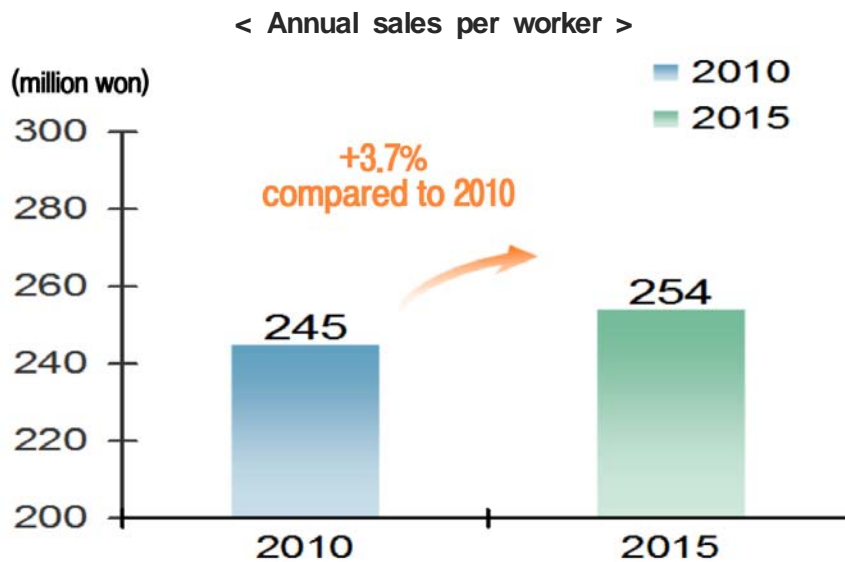
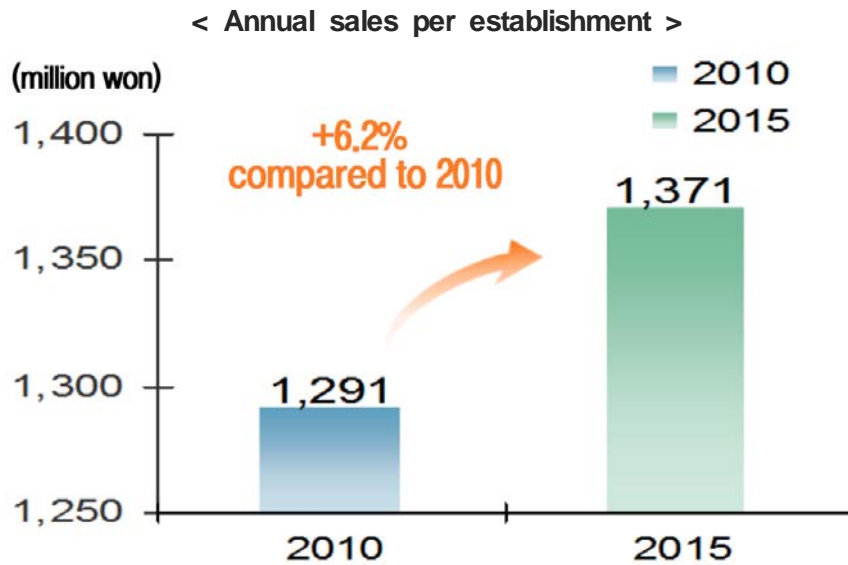
- The annual sales totaled 5,311 trillion won in 2015, which increased by 979 trillion won (22.6%) from 4,332 trillion won in 2010. (an average annual increase of 4.2 percent)
- As for annual sales by industrial section, all industries including 'Real estate activities and renting and leasing' (65.5%) and 'Business facilities management and business support services' (63.9%) recorded an increase.



◇ In 2015, the annual sales per establishment amounted to 1,371 million won, up 6.2 percent from 2010.

- The annual sales per establishment totaled 1,371 million won in 2015, which increased by 6.2 percent from 1,291 million won in 2010.

- The annual sales per worker recorded 254 million won, rising by 3.7 percent from 245 million won in 2010.



Operating balance by industry

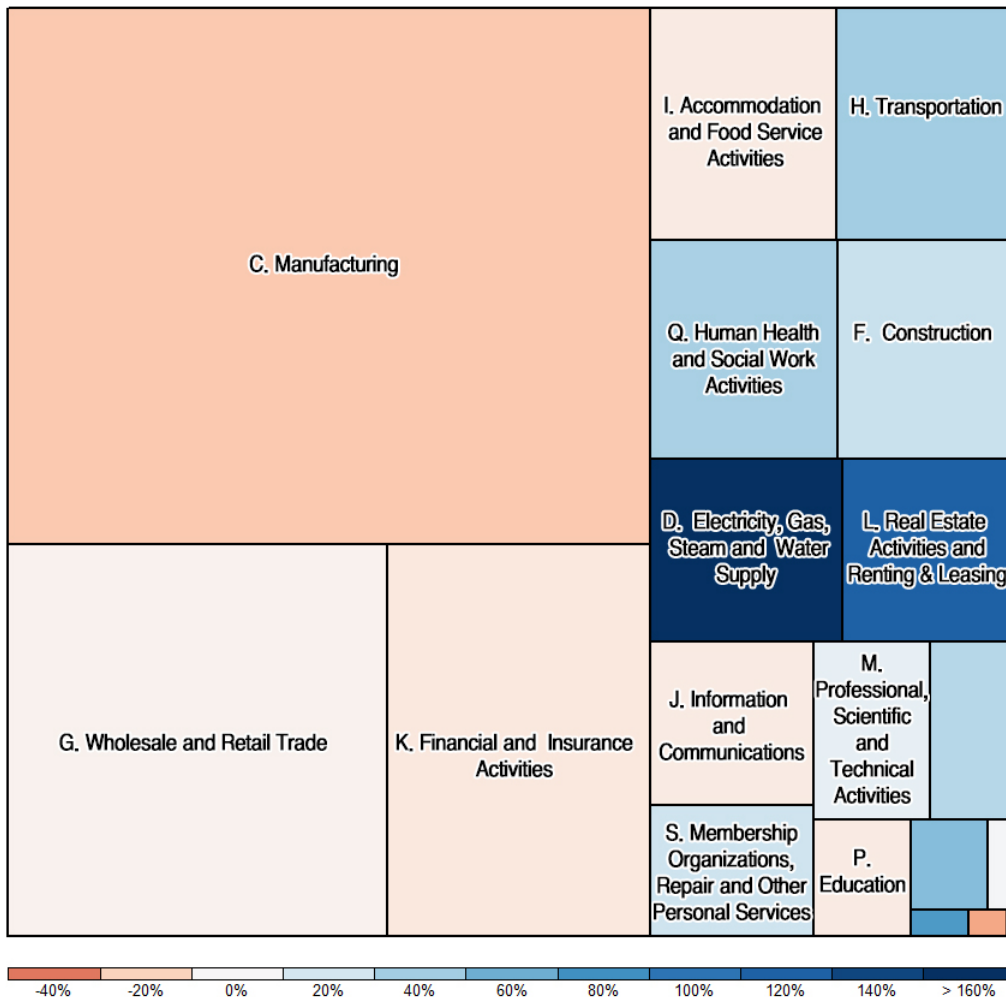
◇ The operating profits totaled 349 trillion won in 2015, decreasing 3.2% from 2010.

- The operating profits totaled 349 trillion won in 2015, decreasing 3.2% from 361 trillion won in 2010.
- As for operating profits by industrial section, 'Manufacturing' recorded the highest figure at 129 trillion won, representing 36.8 percent of the total operating profits. This figure was followed by 'Wholesale and retail trade' (55 trillion won, 15.9%) and 'Financial and insurance activities' (39 trillion won, 11.0%).

< Operating profits >



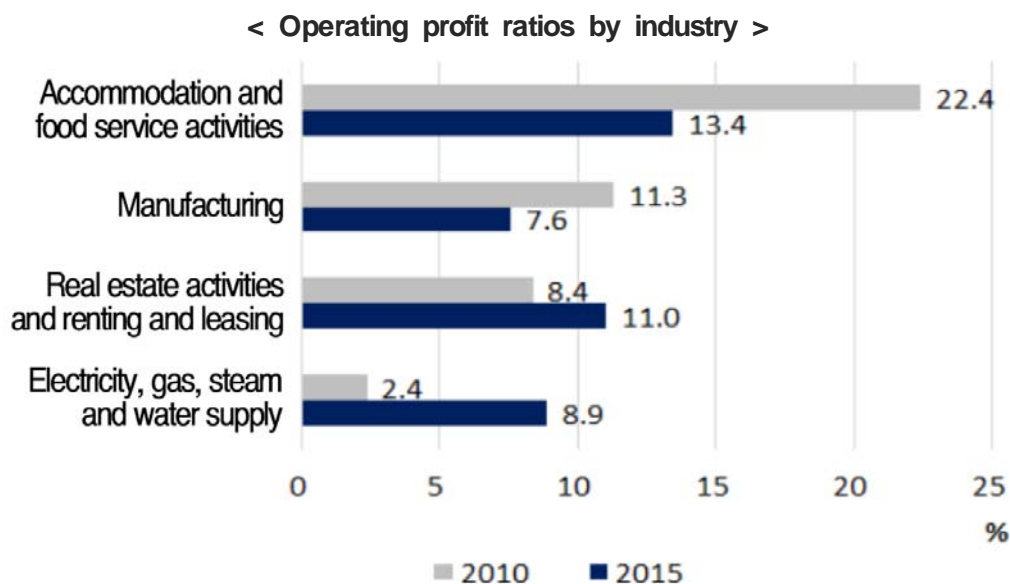
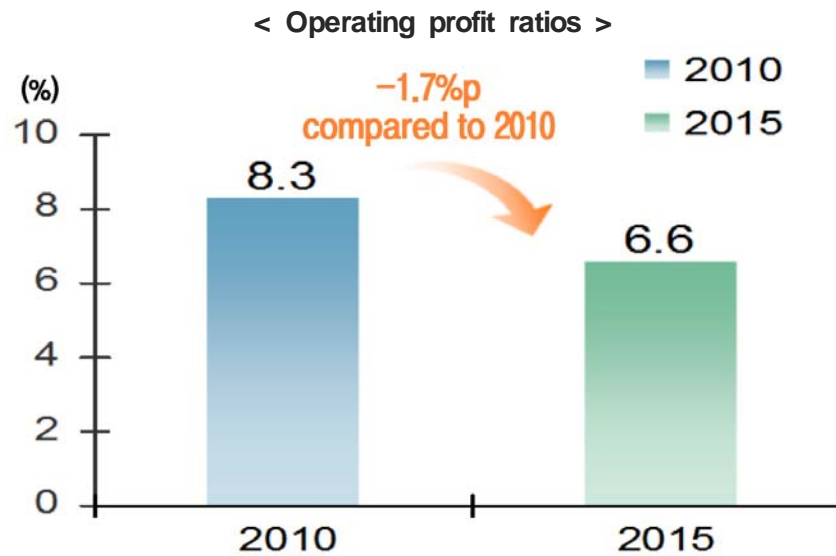
< Operating profits by industry >



◇ The operating profit ratio stood at 6.6 percent in 2015, decreasing 1.7%p from 2010.

○ The operating profit ratio stood at 6.6 percent in 2015, decreasing by 1.7%p compared to 8.3 percent in 2010.

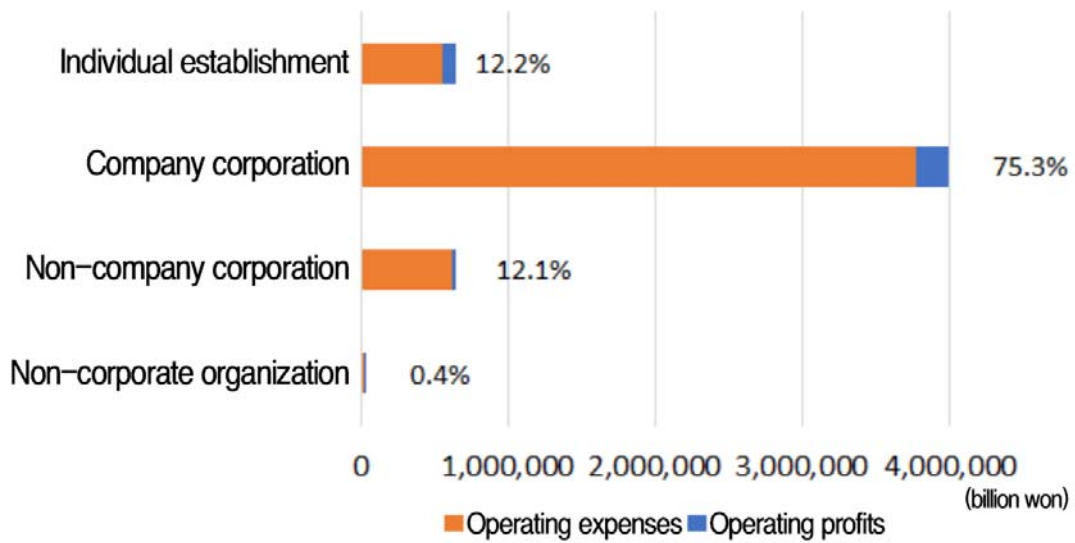
- As for operating profit ratios by industrial section, 'Accommodation and food service activities' and 'Manufacturing' fell by 9.0%p and 3.7%p, respectively. Whereas, 'Electricity, gas, steam and water supply' and 'Real estate activities and renting & leasing' rose by 6.5%p and 2.6%p, respectively.



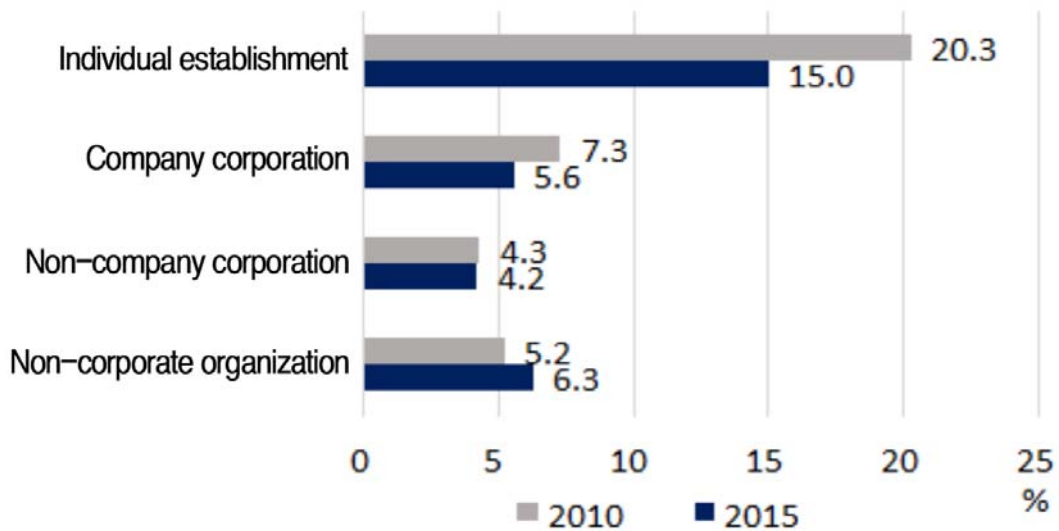
Operating balance by type of legal organization

- ◇ As for annual sales by type of legal organization, company corporations and individual establishments occupied 75.3 percent and 12.2 percent of the total annual sales, respectively. The operating profit ratio of individual establishments marked 15.0 percent in 2015, dropping 5.3%p from 2010.
- In 2015, the operating profit ratio of individual establishments marked the highest figure at 15.0 percent, dropping 5.3%p from 2010. This figure was followed by non-corporate organizations (6.3%) and company corporations (5.6%).

< Annual sales by type of legal organization >



< Operating profit ratios by type of legal organization >

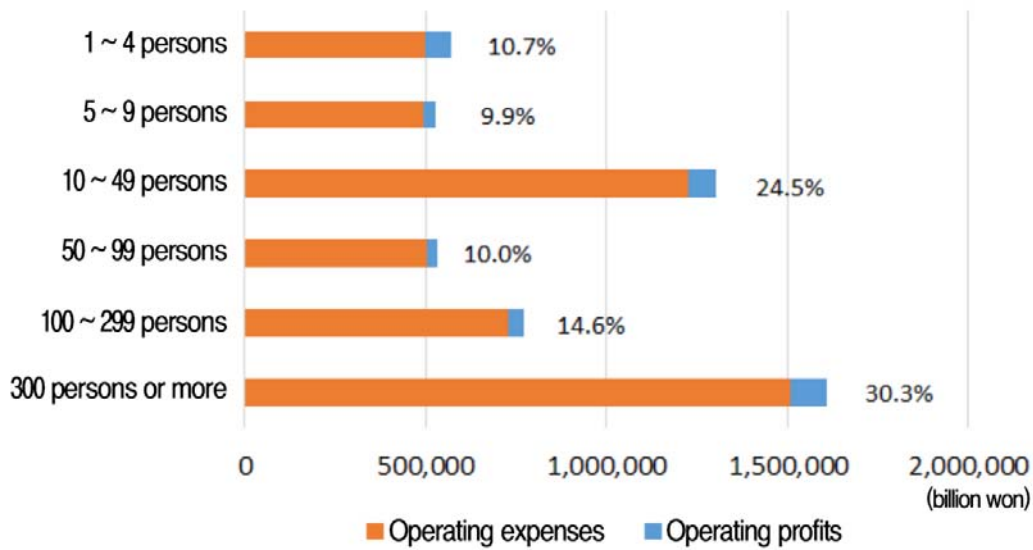


Operating balance by size of workers

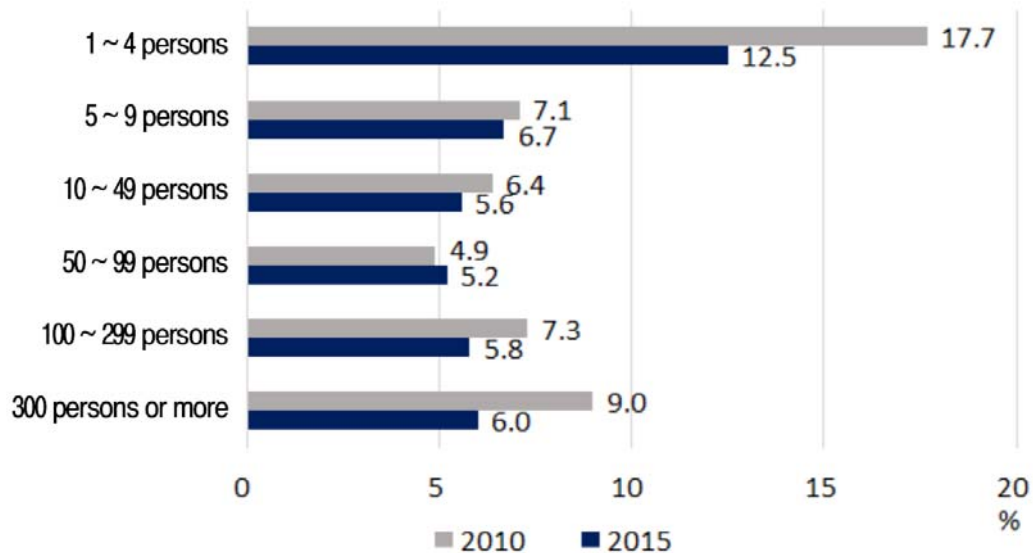
◇ As for annual sales by size of workers, establishments with 300 workers or more occupied 30.3 percent of the total annual sales. Establishments with 10 ~ 49 workers occupied 24.5 percent of the total annual sales. The operating profit ratio of establishments with 1 ~ 4 workers stood at 12.5 percent, falling by 5.2%p from 2010.

- The operating profit ratio of establishments with 1 ~ 4 workers stood at 12.5 percent, falling by 5.2%p from 2010. This figure was followed by establishments with 5 ~ 9 workers (6.7%), those with 300 workers or more (6.0%) and those with 100 ~ 299 workers (5.8%).

< Annual sales by size of workers >



< Operation profit ratios by size of workers >



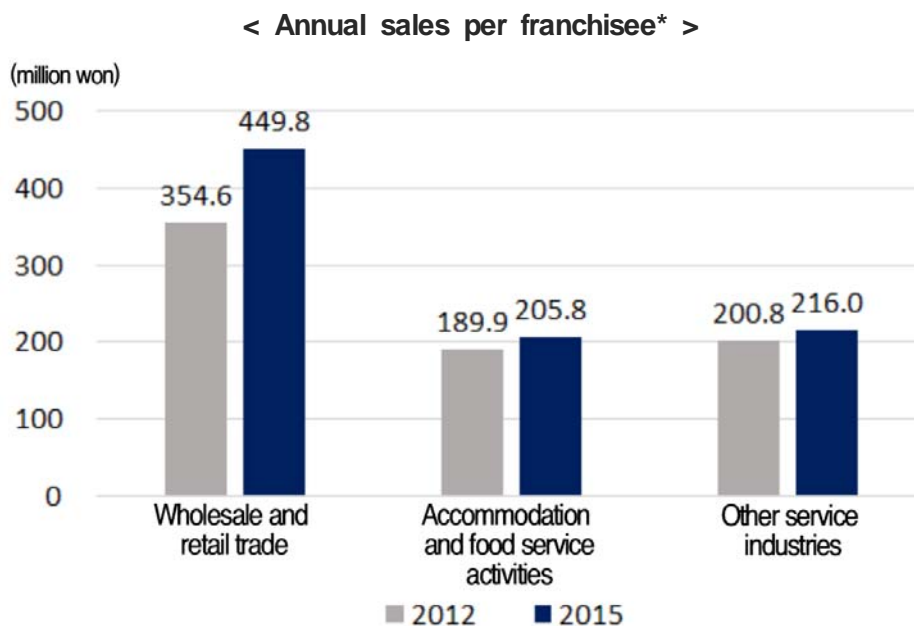
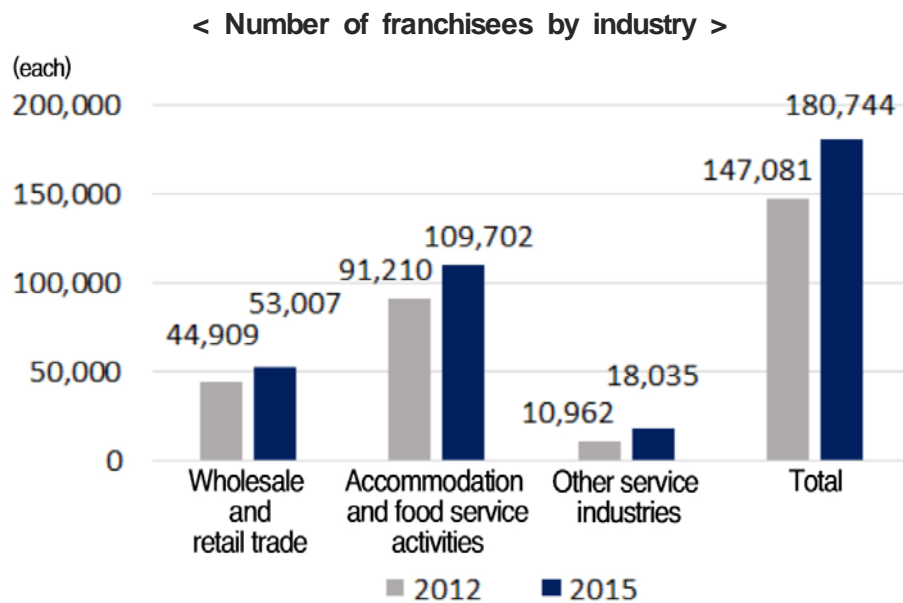
Status of franchisees

◇ In 2015, franchisees (excluding 'Education') totaled 180,744.

- Franchisees in 'Accommodation and food service activities' amounted to 110 thousand. The annual sales totaled 200 million won per franchisee in 'Accommodation and food service activities'. Franchisees in 'Wholesale and retail trade' amounted to 53 thousand. The annual sales totaled 450 million won per franchisee in 'Wholesale and retail trade'.

○ As for franchisees by industrial section, 'Wholesale and retail trade' and 'Accommodation and food service activities' amounted to 53 thousand and 110 thousand, respectively. These 2 industrial sections occupied 90.0 percent of the total franchisees.

- As for annual sales per franchisee, 'Wholesale and retail trade', 'Accommodation and food service activities' and 'Other service industries' totaled 450 million won, 260 million won and 261 million won, respectively.

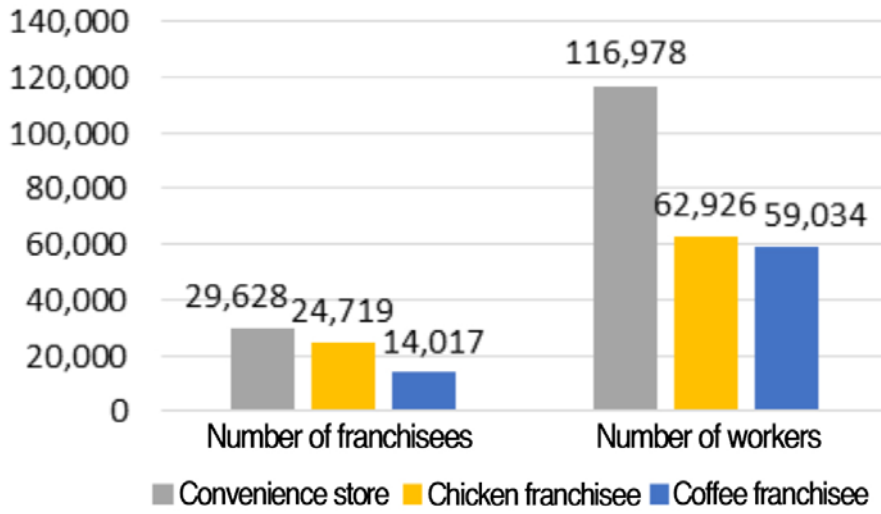


◇ **Annual sales recorded 430 million won per convenience store, 140 million won per chicken franchisee and 160 million won per coffee franchisee.**

- As for franchisees by type of business, convenience stores, chicken franchisees and coffee franchisees recorded 30 thousand, 25 thousand and 14 thousand, respectively. These 3 types of business accounted for 37.8 percent of the total franchisees.
- Annual sales of convenience stores totaled 429.70 million won per franchisee, down 0.3 percent from 2014. Annual sales of coffee franchisees totaled 161.20 million won per franchisee, down 4.2 percent from 2014. Annual sales of chicken franchisees totaled 135.80 million won per franchisee, up 19.0 percent from 2014.

< Number of franchisees and workers by type of business >

(each, person)



< Annual sales per franchisee * >

(million won)

