



Preliminary Results of the 2021 Franchise Survey

In 2020, the number of franchise establishments was 236 thousand, rising by 9.5% from 2019. The total annual sales of franchise establishments recorded 74.4 trillion won, dropping by 0.3% from 2019. The annual sales per franchise establishment fell by 9.0% from 2019. The total number of workers in franchise establishments was 803 thousand persons, decreasing by 5.2% from 2019. The number of workers per franchise establishment dropped by 12.8% from 2019.

□ In 2020, the number of franchise establishments was 236 thousand, which increased by 9.5% (21 thousand establishments) from 2019. The number of workers recorded 803 thousand persons, which decreased by 5.2% (44 thousand workers) from 2019.

○ (Number of franchise establishments)

'Convenience stores', 'Korean food restaurants' and 'Chicken restaurants' took up 46.7% of the total franchise establishments.

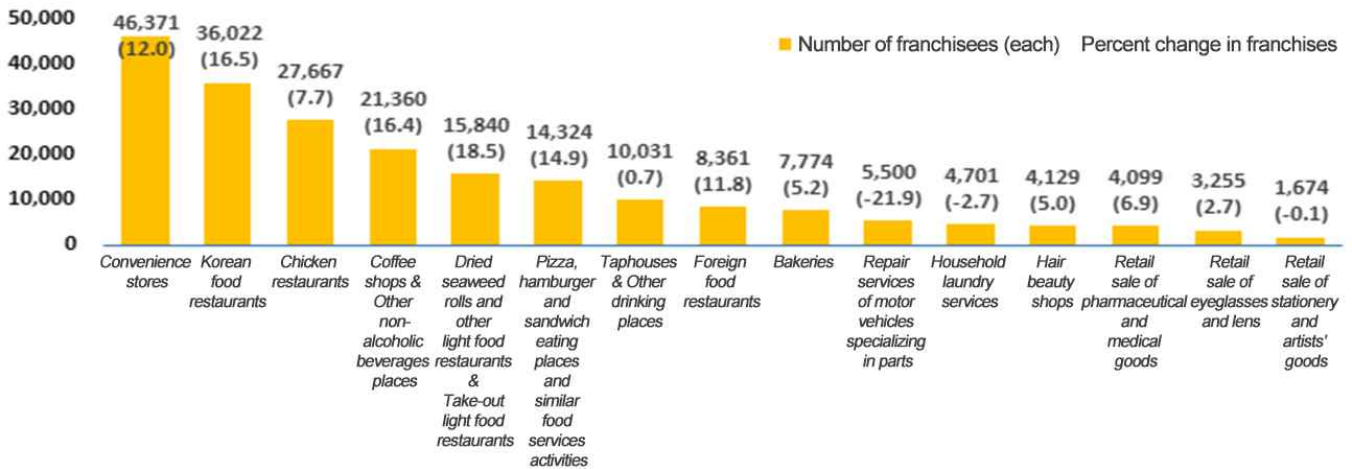
- Compared to 2019, most of food service franchise establishments including 'Dried seaweed rolls and other light food restaurants & Take-out light food restaurants' (18.5%), 'Korean food restaurants' (16.5%) and 'Coffee shops & Other non-alcoholic beverages places' (16.4%), and 'Convenience stores' (12.0%) recorded an increase in franchise establishments.

< Number of franchise establishments by industry >

(Unit: each, %)

By industry	2019	2020	Compo- sition	Change from	
				the previous year	Percent change
Total industries	215,188	235,709	100.0	20,521	9.5
Convenience stores	41,394	46,371	19.7	4,977	12.0
Retail sale of stationery and artists' goods	1,675	1,674	0.7	-1	-0.1
Retail sale of pharmaceutical and medical goods	3,836	4,099	1.7	263	6.9
Retail sale of eyeglasses and lens	3,169	3,255	1.4	86	2.7
Korean food restaurants	30,927	36,022	15.3	5,095	16.5
Foreign food restaurants	7,476	8,361	3.5	885	11.8
Bakeries	7,390	7,774	3.3	384	5.2
Pizza, hamburger and sandwich eating places and similar food services activities	12,468	14,324	6.1	1,856	14.9
Chicken restaurants	25,687	27,667	11.7	1,980	7.7
Dried seaweed rolls and other light food restaurants & Take-out light food restaurants	13,371	15,840	6.7	2,469	18.5
Taphouses & Other drinking places	9,965	10,031	4.3	66	0.7
Coffee shops & Other non-alcoholic beverages places	18,350	21,360	9.1	3,010	16.4
Repair services of motor vehicles specializing in parts	7,044	5,500	2.3	-1,544	-21.9
Hair beauty shops	3,933	4,129	1.8	196	5.0
Household laundry services	4,832	4,701	2.0	-131	-2.7
Others	23,671	24,601	10.4	930	3.9

< Number of franchise establishments and percent change by industry >



○ (Number of workers)

'Convenience stores', 'Korean food restaurants' and 'Coffee shops & Other non-alcoholic beverages places' occupied 47.6% of the total workers in franchise establishments.

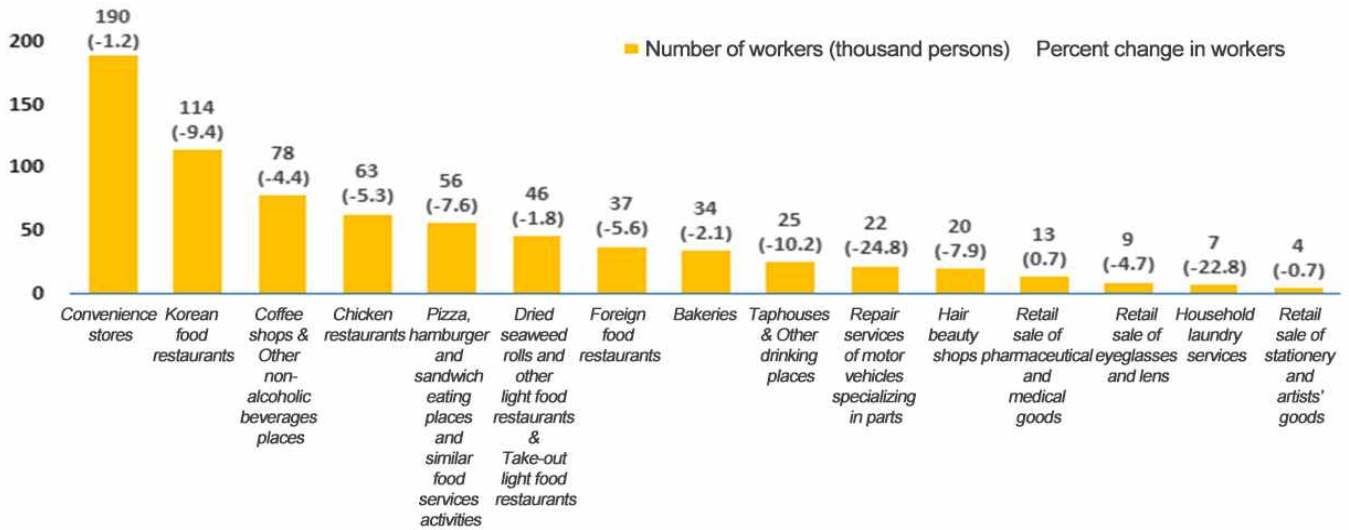
- Compared to 2019, 'Korean food restaurants', 'Pizza, hamburger and sandwich eating places and similar food services activities' and 'Coffee shops & Other non-alcoholic beverage places' decreased by 9.4%, 7.6% and 4.4%, respectively.

< Number of workers by industry >

(Unit: person, %)

By industry	2019	2020	Compo- sition	Change from the previous year	
				Change from the previous year	Percent change
Total industries	846,832	802,501	100.0	-44,331	-5.2
Convenience stores	192,616	190,364	23.7	-2,252	-1.2
Retail sale of stationery and artists' goods	4,412	4,379	0.5	-33	-0.7
Retail sale of pharmaceutical and medical goods	12,862	12,952	1.6	90	0.7
Retail sale of eyeglasses and lens	8,985	8,563	1.1	-422	-4.7
Korean food restaurants	126,022	114,161	14.2	-11,861	-9.4
Foreign food restaurants	39,233	37,031	4.6	-2,202	-5.6
Bakeries	34,267	33,560	4.2	-707	-2.1
Pizza, hamburger and sandwich eating places and similar food services activities	60,572	55,941	7.0	-4,631	-7.6
Chicken restaurants	66,854	63,331	7.9	-3,523	-5.3
Dried seaweed rolls and other light food restaurants & Take-out light food restaurants	46,342	45,513	5.7	-829	-1.8
Taphouses & Other drinking places	28,272	25,391	3.2	-2,881	-10.2
Coffee shops & Other non-alcoholic beverages places	81,303	77,695	9.7	-3,608	-4.4
Repair services of motor vehicles specializing in parts	29,349	22,057	2.7	-7,292	-24.8
Hair beauty shops	21,339	19,656	2.4	-1,683	-7.9
Household laundry services	9,113	7,031	0.9	-2,082	-22.8
Others	85,295	84,876	10.6	-419	-0.5

< Number of workers and percent change by industry >



○ (Number of workers per franchise establishment)

In 2020, the number of workers stood at 3.4 persons per franchise establishment, which fell by 12.8% from 2019.

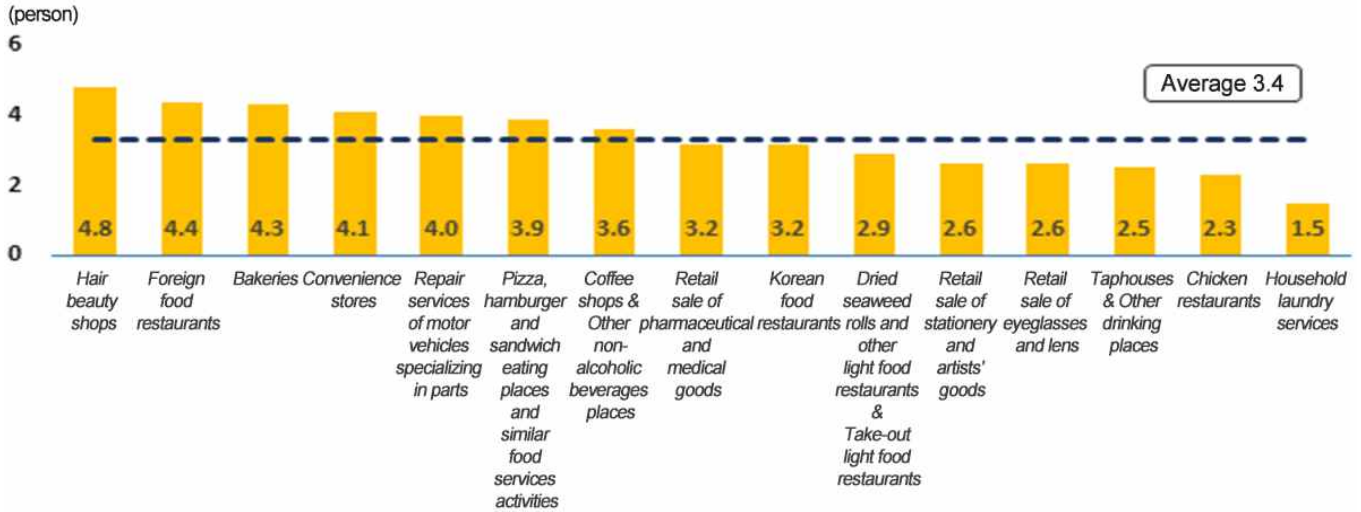
- In particular, 'Korean food restaurants', 'Household laundry services', 'Pizza, hamburger and sandwich eating places and similar food services activities' and 'Coffee shops & Other non-alcoholic beverage places' declined by 22.0%, 21.1%, 20.4% and 18.2%, respectively.

< Number of workers per franchise establishment by industry >

(Unit: person, %)

By industry	2019	2020	Change from the previous year	Percent change
Total industries	3.9	3.4	-0.5	-12.8
Convenience stores	4.7	4.1	-0.6	-12.8
Retail sale of stationery and artists' goods	2.6	2.6	0.0	0.0
Retail sale of pharmaceutical and medical goods	3.4	3.2	-0.2	-5.9
Retail sale of eyeglasses and lens	2.8	2.6	-0.2	-7.1
Korean food restaurants	4.1	3.2	-0.9	-22.0
Foreign food restaurants	5.2	4.4	-0.8	-15.4
Bakeries	4.6	4.3	-0.3	-6.5
Pizza, hamburger and sandwich eating places and similar food services activities	4.9	3.9	-1.0	-20.4
Chicken restaurants	2.6	2.3	-0.3	-11.5
Dried seaweed rolls and other light food restaurants & Take-out light food restaurants	3.5	2.9	-0.6	-17.1
Taphouses & Other drinking places	2.8	2.5	-0.3	-10.7
Coffee shops & Other non-alcoholic beverages places	4.4	3.6	-0.8	-18.2
Repair services of motor vehicles specializing in parts	4.2	4.0	-0.2	-4.8
Hair beauty shops	5.4	4.8	-0.6	-11.1
Household laundry services	1.9	1.5	-0.4	-21.1
Others	3.6	3.5	-0.1	-2.8

< Number of workers per franchise establishment by industry >



□ In 2020, the total annual sales of franchise establishments recorded 74.4 trillion won, which dropped by 0.3% (260 billion won) from 2019.

○ (Annual sales)

'Convenience stores', 'Korean food restaurants' and 'Chicken restaurants' accounted for 50.2% of the total annual sales of franchise establishments.

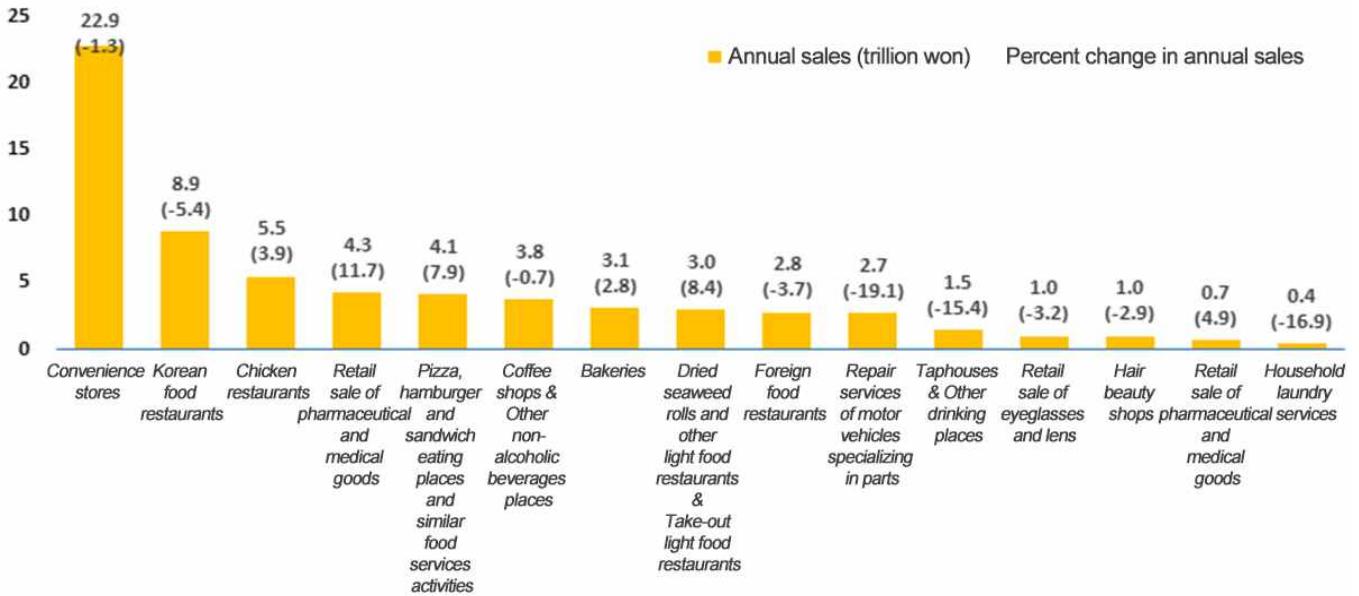
- Compared to 2019, 'Retail sale of pharmaceutical and medical goods' and 'Dried seaweed rolls and other light food restaurants & Take-out light food restaurants' grew by 11.7% and 8.4%, respectively. Whereas, 'Taphouses & Other drinking places' and 'Korean food restaurants' dropped by 15.4% and 5.4%, respectively.

< Annual sales by industry >

(Unit: billion won, %)

By industry	2019	2020	Compo- sition	Change from the previous year	
				Change from the previous year	Percent change
Total industries	74,620	74,365	100.0	-255	-0.3
Convenience stores	23,198	22,888	30.8	-310	-1.3
Retail sale of stationery and artists' goods	648	679	0.9	32	4.9
Retail sale of pharmaceutical and medical goods	3,858	4,311	5.8	453	11.7
Retail sale of eyeglasses and lens	1,054	1,020	1.4	-34	-3.2
Korean food restaurants	9,456	8,949	12.0	-507	-5.4
Foreign food restaurants	2,859	2,754	3.7	-105	-3.7
Bakeries	2,995	3,080	4.1	85	2.8
Pizza, hamburger and sandwich eating places and similar food services activities	3,787	4,085	5.5	298	7.9
Chicken restaurants	5,288	5,493	7.4	206	3.9
Dried seaweed rolls and other light food restaurants & Take-out light food restaurants	2,813	3,049	4.1	237	8.4
Taphouses & Other drinking places	1,806	1,529	2.1	-277	-15.4
Coffee shops & Other non-alcoholic beverages places	3,845	3,817	5.1	-28	-0.7
Repair services of motor vehicles specializing in parts	3,335	2,698	3.6	-636	-19.1
Hair beauty shops	1,052	1,022	1.4	-30	-2.9
Household laundry services	517	430	0.6	-87	-16.9
Others	8,109	8,561	11.5	451	5.6

< Annual sales and percent change by industr >



○ (Annual sales per franchise establishment)

Annual sales per franchise establishment recorded 315.50 million won in 2020, which fell by 9.0% from 2019.

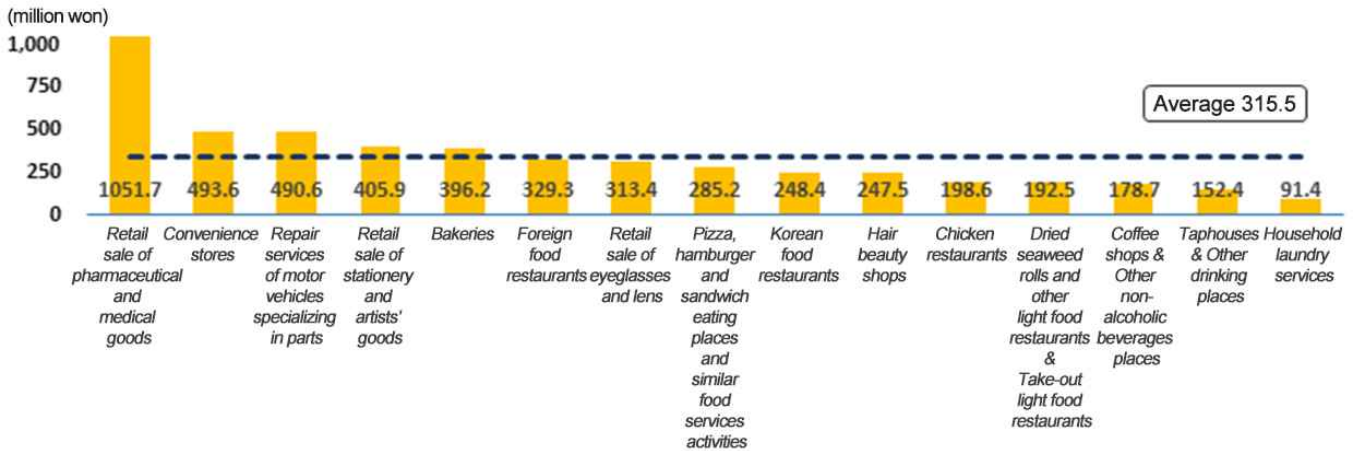
- Compared to 2019, 'Korean food restaurants', 'Taphouses & Other drinking places' and 'Coffee shops & Other non-alcoholic beverage places' fell by 18.7%, 15.9% and 14.7%, respectively. Whereas, 'Retail sale of stationery and artists' goods', 'Retail sale of pharmaceutical and medical goods' and 'Repair services of motor vehicles specializing in parts' grew by 4.9%, 4.6% and 3.6%, respectively.

< Annual sales per franchise establishment by industry >

(Unit: million won, %)

By industry		2019	2020	Change from the previous year	Percent change
Total industries		346.8	315.5	-31.3	-9.0
Major industries	Convenience stores	560.4	493.6	-66.8	-11.9
	Retail sale of stationery and artists' goods	386.8	405.9	19.1	4.9
	Retail sale of pharmaceutical and medical goods	1,005.8	1,051.7	45.9	4.6
	Retail sale of eyeglasses and lens	332.5	313.4	-19.1	-5.7
	Korean food restaurants	305.7	248.4	-57.3	-18.7
	Foreign food restaurants	382.4	329.3	-53.1	-13.9
	Bakeries	405.3	396.2	-9.1	-2.2
	Pizza, hamburger and sandwich eating places and similar food services activities	303.7	285.2	-18.5	-6.1
	Chicken restaurants	205.9	198.6	-7.3	-3.5
	Dried seaweed rolls and other light food restaurants & Take-out light food restaurants	210.4	192.5	-17.9	-8.5
	Taphouses & Other drinking places	181.3	152.4	-28.9	-15.9
	Coffee shops & Other non-alcoholic beverages places	209.5	178.7	-30.8	-14.7
	Repair services of motor vehicles specializing in parts	473.4	490.6	17.2	3.6
	Hair beauty shops	267.6	247.5	-20.1	-7.5
	Household laundry services	107.0	91.4	-15.6	-14.6
Others	342.6	348.0	5.4	1.6	

< Annual sales per franchise establishment by industry >



< Major indicators of the franchising industry >

	2019	2020	Change	Percent change (%)
Number of franchise establishments (each)	215,188	235,709	20,521	9.5
Number of workers (person)	846,832	802,501	-44,331	-5.2
Number of workers per franchise establishment (person)	3.9	3.4	-0.5	-12.8
Annual sales (billion won)	74,620	74,365	-255	-0.3
Annual sales per franchise establishment (million won)	346.8	315.5	-31.3	-9.0